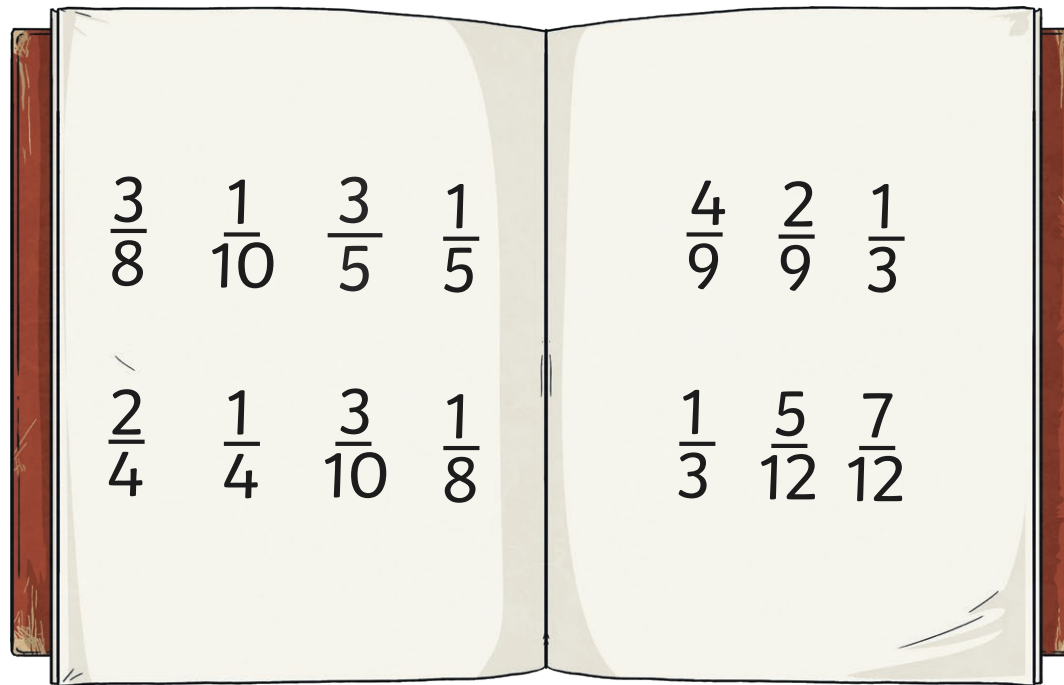


Lost in the Library

Clue 1

A book on fractions provides the first clue. A page in the book contains some fractions. Find the two fractions that add up to $\frac{1}{2}$.



The denominator of the two fractions gives the first clue.

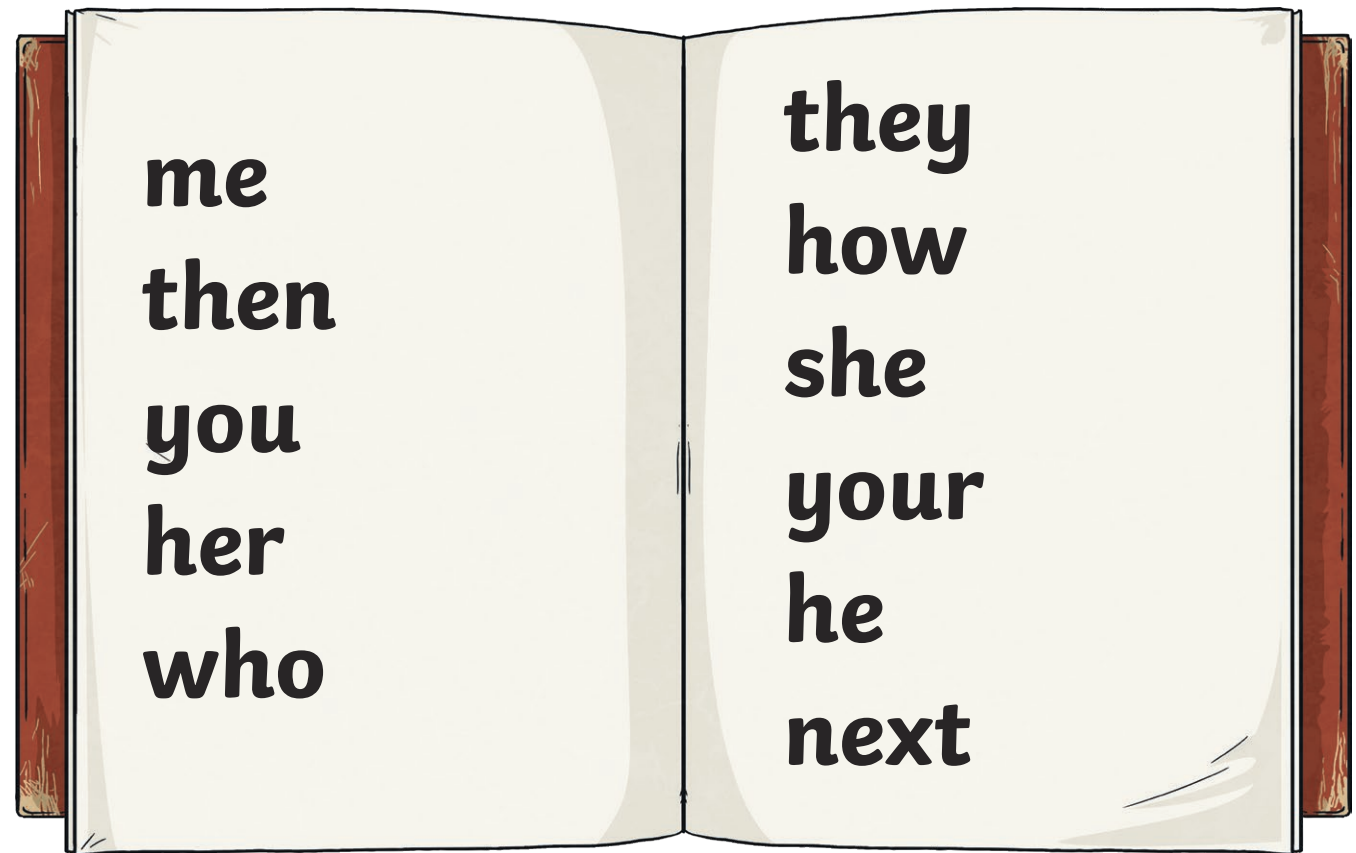
This is the **first** digit you need to unlock the door.

Lost in the Library

Clue 2

In a dictionary, a set of words are listed.
How many words are personal pronouns?

The number of personal pronouns gives the second clue.



This is the **second** digit you need to unlock the door.

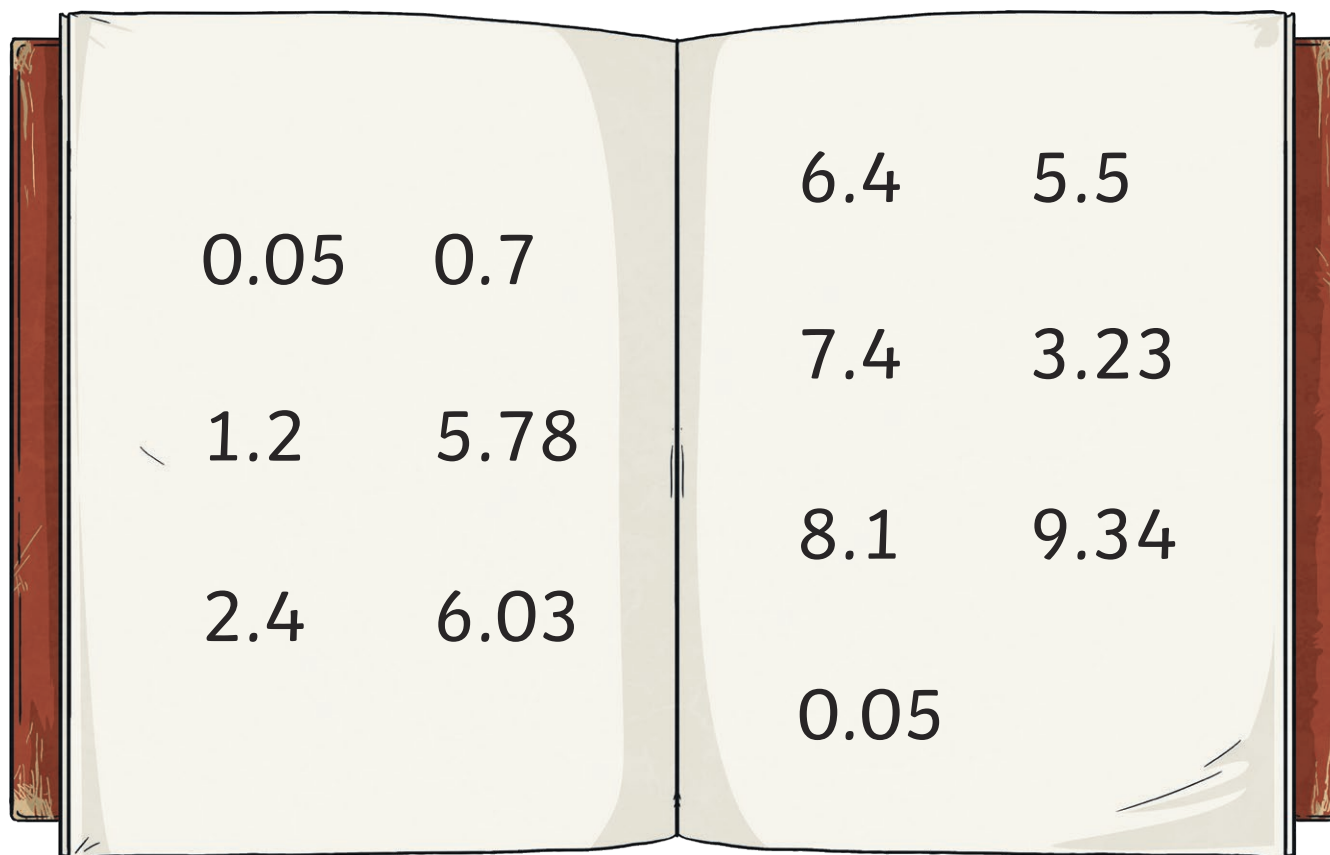
Lost in the Library

Clue 3

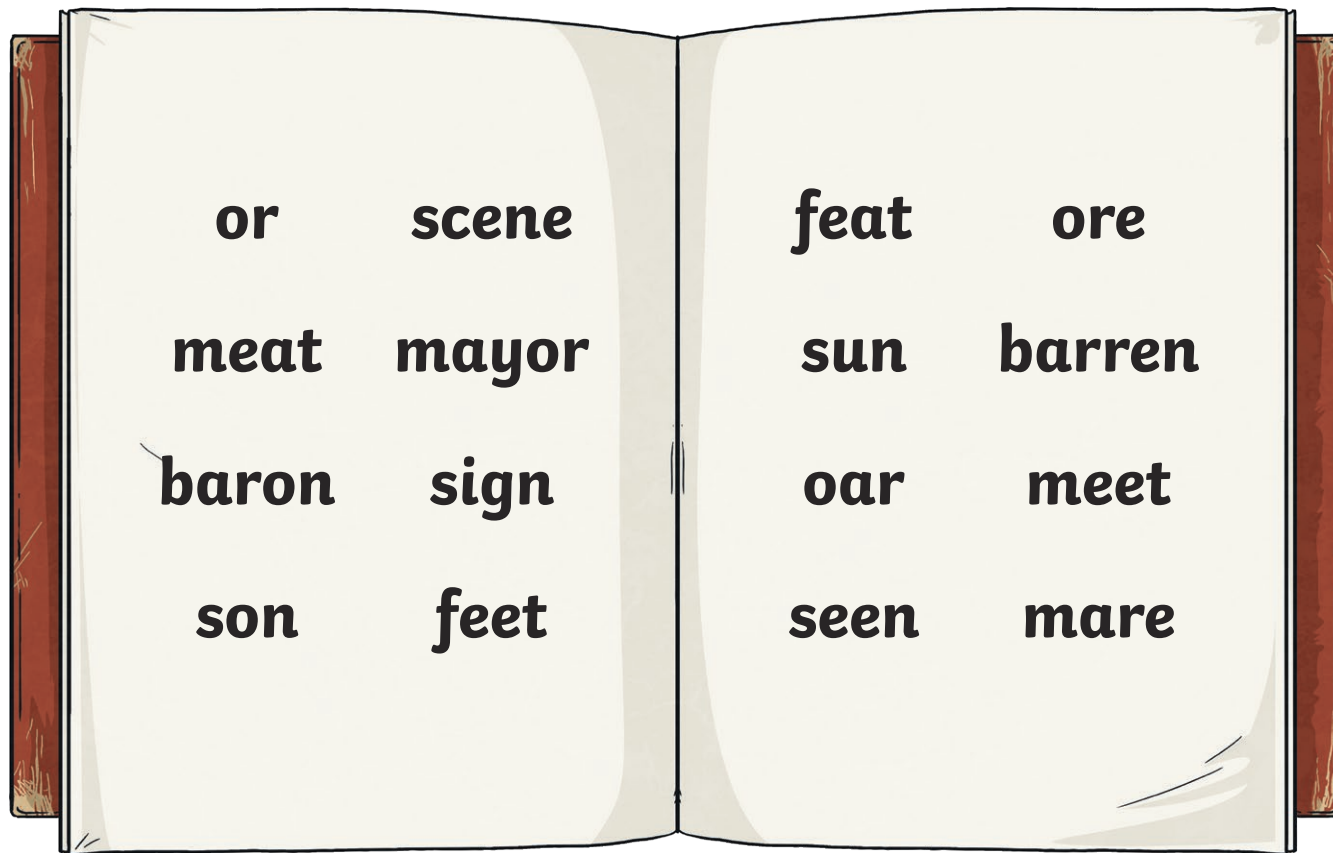
A second page in the book on fractions gives the third clue.

There are some decimal fractions. Round all the fractions to the nearest whole number.

The number that appears most frequently is the next clue.



This is the **third** digit you need to unlock the door.



A grammar book provides the fourth clue.

Match the homophones. One word will be left over. (There may be 2 or 3 in each set of homophones.)

The number of letters in the word that is left over gives the fourth clue.

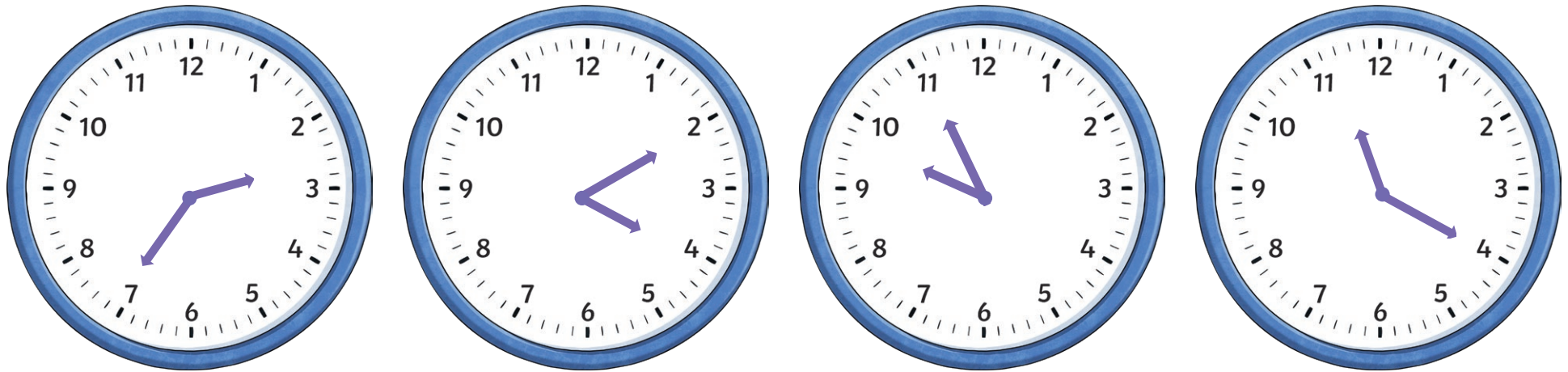
This is the **fourth** digit you need to unlock the door.



Lost in the Library

Clue 5

The library has a number of clocks on the wall showing the time in different cities around the world. All the times are between 9am (in the morning) and 5pm (in the afternoon).



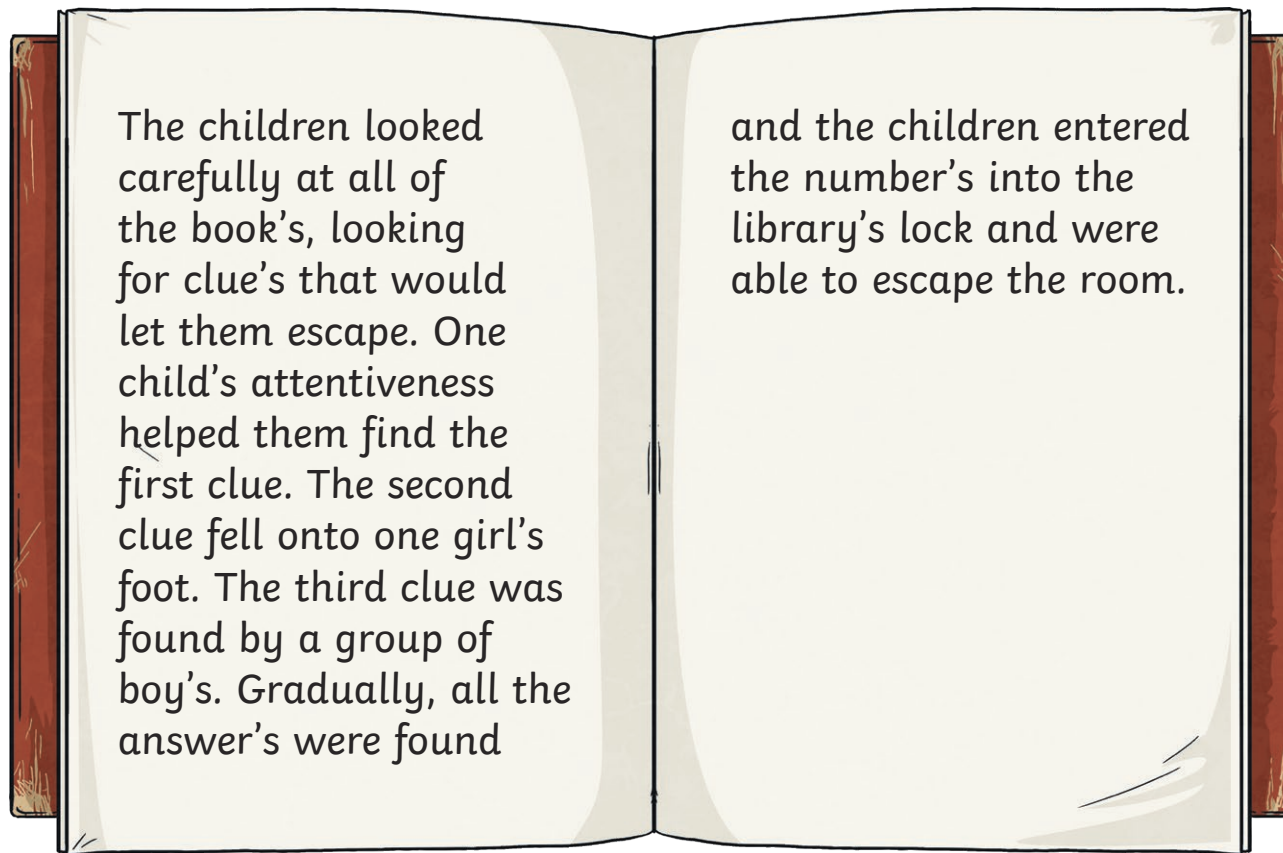
Find the number of minutes between the earliest 2 times.

The tens digit in the answer gives the fifth clue.

This is the **fifth** digit you need to unlock the door.

Lost in the Library

Clue 6



The children looked carefully at all of the book's, looking for clue's that would let them escape. One child's attentiveness helped them find the first clue. The second clue fell onto one girl's foot. The third clue was found by a group of boy's. Gradually, all the answer's were found

and the children entered the number's into the library's lock and were able to escape the room.

The sixth clue is in an adventure story. How many incorrect uses of the possessive apostrophe are in this paragraph?

The number of incorrect uses of the possessive pronoun is the sixth clue.

This is the **sixth** digit you need to unlock the door.

Lost in the Library

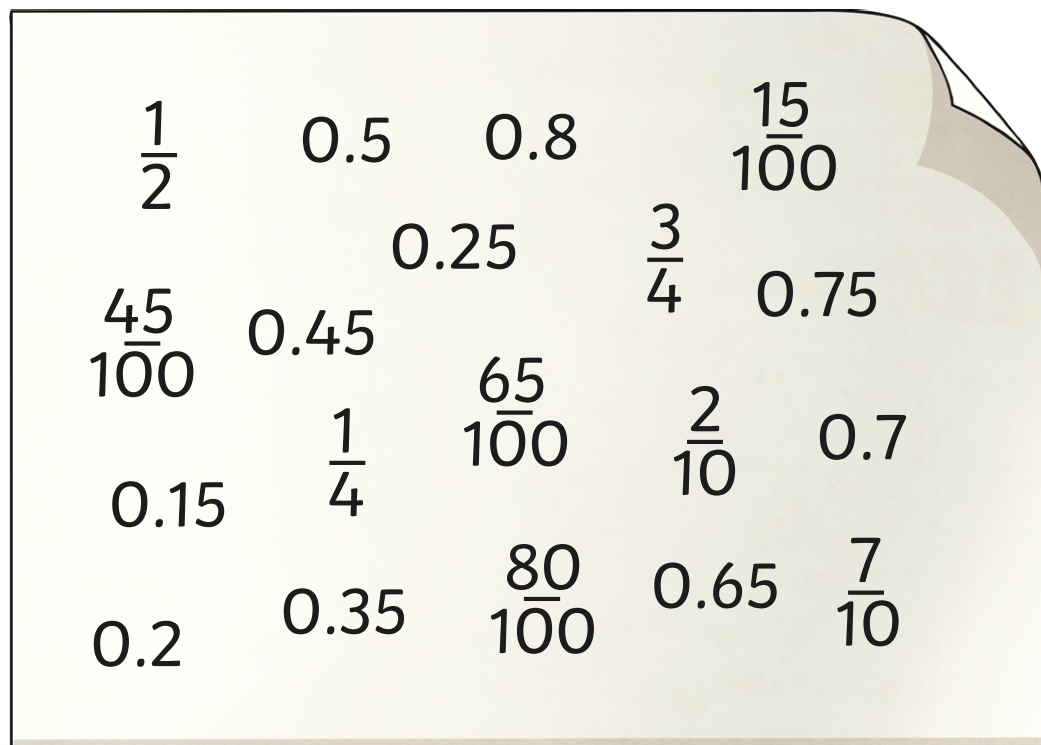
Clue 7

Clue number 7 is found on a poster in the library, which shows a set of fractions and decimal fractions.

Match the equivalent fractions and decimal fractions.

Find the decimal with no matching fraction.

The tenths digit in the decimal fraction with no equivalent fraction gives the seventh clue.



$\frac{1}{2}$ 0.5 0.8 $\frac{15}{100}$
0.25 $\frac{3}{4}$ 0.75
 $\frac{45}{100}$ 0.45 $\frac{65}{100}$ $\frac{2}{10}$ 0.7
0.15 $\frac{1}{4}$
0.2 0.35 $\frac{80}{100}$ 0.65 $\frac{7}{10}$

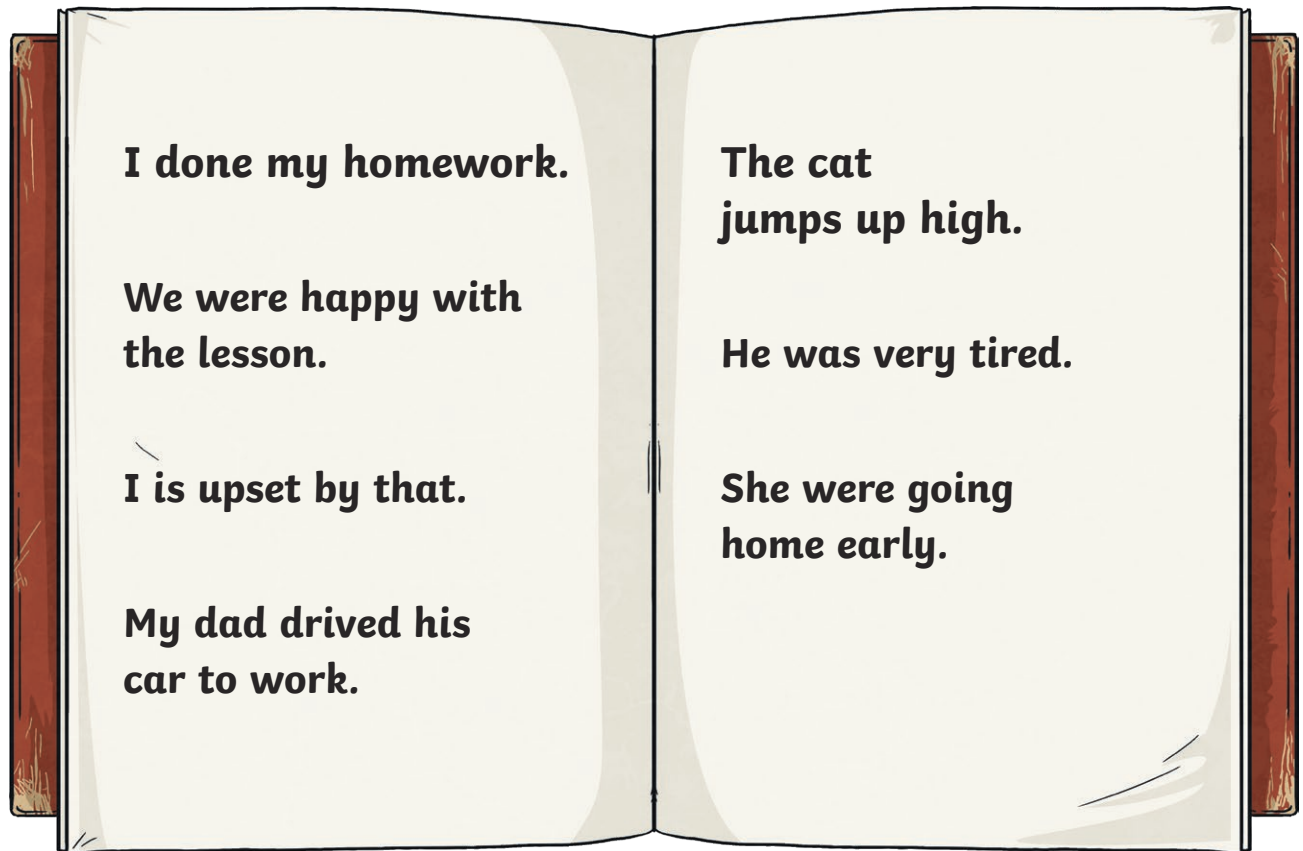
This is the **seventh** digit you need to unlock the door.

Lost in the Library

Clue 8

Clue number 8 is found in a notebook which has a set of phrases.

The number of incorrectly written phrases gives clue number eight.



This is the **eighth** digit you need to unlock the door.

Lost in the Library

Clue 9



The ninth clue appears on a computer screen, which shows two piles of money.

Find the difference between the two piles of money.

The answer in pence is the ninth clue.

This is the **ninth** digit you need to unlock the door.

Lost in the Library

Clue 10

The final clue is found on a bookmark with a list of sentences showing direct speech.

"I can't find the book," he said.

She asked "How hard can the clue be"?

"I'm going to look up here she exclaimed!"

"Can you reach up here?" she asked.

One said to the other. "I'm getting hungry!"

"I'm getting cold, he said.

One of the girls said, "There's only one more clue to find."

The number of correctly punctuated sentences gives the last clue.

This is the **tenth** digit you need to unlock the door.